

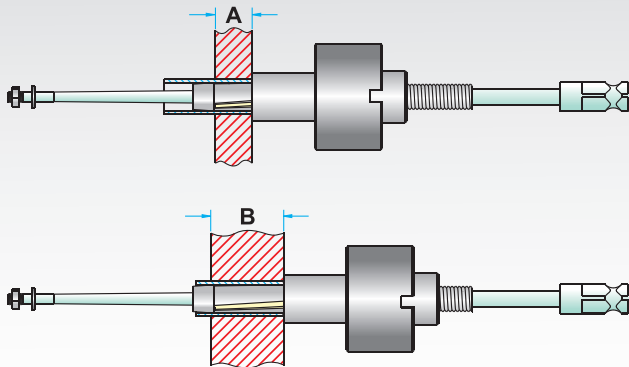
# 900

## SERIES CONDENSER TUBE EXPANDER



# Subzero

The Tube Expander Company...



| TUBE EXPANDERS<br>FITTED WITH<br>ROLLER LENGTH | FOR TUBE SHEET<br>ADJUSTABLE RANGE |              |
|--|------------------------------------|--------------|
|  | MINIMUM<br>A                       | MAXIMUM<br>B |
| (19.05mm) 3/4"                                 | 6.35mm                             | 19.05mm      |
| (31.75mm) 1.1/4"                               | 19.05mm                            | 31.75mm      |

- Use : Oil Coolers, Radiators and other apparatus with small diameter tubes.
- This tool has been the workhorse for several years for use on small diameter tubes.

### ■ SPECIFICATIONS

| Tube O.D.      | Tube Thickness |      | Tube I.D. | Minimum I.D.<br>Tool Enters | Maximum<br>Expansion Tool | EXPANDER with (19.05 mm) 3/4"<br>Long Rollers |             |             | EXPANDER with (31.75 mm) 1.1/4"<br>Long Rollers |             |             |
|----------------|----------------|------|-----------|-----------------------------|---------------------------|---|-------------|-------------|---|-------------|-------------|
|                | (mm)           | inch |           |                             |                           | Complete Tool No.                             | Mandrel No. | Rollers No. | Complete Tool No.                               | Mandrel No. | Rollers No. |
| (6.35)<br>1/4" | 20             | 0.88 | 4.5       | 4.4                         | 5.1                       | 923   | M-40        | 923         | -   | -           | -           |
|                | 21             | 0.81 | 4.7       | 4.5                         | 5.2                       | 924   | M-40        | 924         | -   | -           | -           |
|                | 22             | 0.71 | 4.9       | 4.8                         | 5.5                       | 925   | M-41        | 925         | -   | -           | -           |
|                | 23             | 0.63 | 5.0       | 4.9                         | 5.6                       | 926   | M-41        | 923         | -   | -           | -           |
|                | 24             | 0.55 | 5.2       | 5.1                         | 5.8                       | 927   | M-41        | 924         | -   | -           | -           |
|                | 28             | 0.35 | 5.6       | 5.6                         | 6.0                       | 928   | 928         | 903         | -   | -           | -           |
|                | 29             | 0.33 | 5.7       | 5.6                         | 6.0                       | 928   | 928         | 903         | -   | -           | -           |
|                | 30             | 0.30 | 5.7       | 5.6                         | 6.0                       | 928   | 928         | 903         | -   | -           | -           |

|                |    |      |     |     |     |     |      |     |       |        |       |
|----------------|----|------|-----|-----|-----|-----|------|-----|-------|--------|-------|
| (9.53)<br>3/8" | 14 | 2.10 | 5.3 | 5.1 | 5.8 | 927 | M-41 | 924 | -     | -      | -     |
|                | 15 | 1.82 | 5.8 | 5.8 | 6.7 | 915 | M-42 | 903 | -     | -      | -     |
|                | 16 | 1.65 | 6.2 | 6.1 | 6.9 | 916 | M-36 | 916 | 916 L | M-36 L | 916 L |
|                | 17 | 1.47 | 6.5 | 6.4 | 7.3 | 918 | M-38 | 903 | 920   | M-38   | 904   |
|                | 18 | 1.24 | 7.0 | 6.9 | 7.8 | 901 | M-30 | 903 | 902   | M-30   | 904   |
|                | 19 | 1.06 | 7.3 | 7.2 | 8.1 | 903 | M-31 | 903 | 904   | M-31   | 904   |
|                | 20 | 0.88 | 7.7 | 7.6 | 8.4 | 905 | M-32 | 907 | 906   | M-32   | 908   |
|                | 21 | 0.81 | 7.9 | 7.7 | 8.6 | 907 | M-33 | 907 | 908   | M-33   | 908   |
|                | 22 | 0.71 | 8.1 | 7.9 | 8.8 | 909 | M-34 | 909 | 910   | M-34   | 910   |
|                | 23 | 0.63 | 8.2 | 8.1 | 9.0 | 911 | M-34 | 911 | 912   | M-34   | 912   |
|                | 24 | 0.55 | 8.4 | 8.1 | 9.0 | 911 | M-34 | 911 | 912   | M-34   | 912   |

Note: All 900 series expanders come with 1/4" sq. mandrel drive .